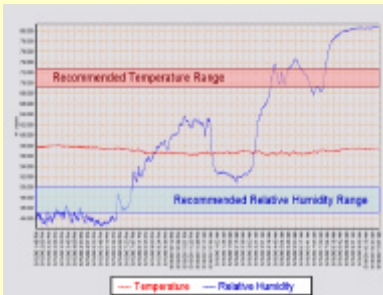
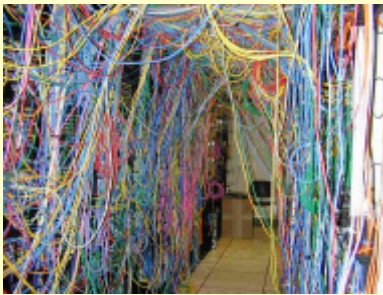


WES

Worldwide Environmental Services

Environmental Site Assessments – ESA & EPSA

WES Environmental Site Assessments are an essential tool for the maintenance of high availability operations for mission critical hardware.



Maintaining an appropriate environment for mission critical hardware is an essential component of system availability.

Worldwide Environmental Services - WES - is a global provider of high availability environmental assessment, design and remediation services for mission critical computer facilities. WES has performed more than 5000 engagements at customer facilities in over 30 countries over the past 25 years, and has partnered with leading computer hardware manufacturers and services companies to provide integrated solutions at customer sites spanning all markets. As an industry leader with a unique knowledge-base, WES is committed to raising industry awareness regarding the impact of the environment on mission critical computer equipment and providing services and solutions to help customers avoid unplanned downtime.

The Environmental Site Assessment (ESA) is a comprehensive environmental evaluation designed specifically for computer facilities, concentrating on factors that affect hardware reliability and system availability. This service focuses both on actual room conditions at the time of the assessment as well as the ability of the facility to provide stable and appropriate conditions that consistently meet the specific requirements of the hardware. It provides both a useful baseline of conditions, as well as identification of actual problems and potential susceptibilities that could impact hardware operations. Each assessment is dynamically tailored to the specific requirements dictated by the individual site.

The Environmental Site Assessment (ESA) focuses on the following core elements:

- Visual examination & photo-documentation of conditions
- Temperature & relative humidity measurement throughout room and at hardware intakes
- Long-term temperature & relative humidity monitoring
- Air distribution assessment
- Cabinet / rack design and placement assessment
- Environmental support equipment design and installation assessment
- Perimeter integrity inspection
- Contaminant source identification
- Airborne particulate & gas concentration measurements
- Laboratory analysis of field samples
- Practices and procedures (cleaning, maintenance, etc.) assessment
- General safety & security inspection
- General electrical infrastructure & grounding review
- Computer room practices
- Future planning considerations

The Environmental & Power Site Assessment (EPSA) includes the following additional areas:

- Inspection of the accessible electrical distribution system serving critical subject areas
- Examination of critical equipment and supplemental grounding systems and practices.
- Examination of Building Monitoring System (BMS) and available site data & documentation
- Interviews with relevant site personnel regarding electrical system & critical hardware
- Short-term power quality measurements at accessible and approved points

Both of these services include a detailed site inspection, comprehensive report and presentation of findings.

To engage WES services, please contact a Support Specialist at:

support@wes.net

Or visit our website for more information:

www.wes.net

Worldwide Environmental Services
+1 215 619 0980 / 800 843 5307
0800 028 7448 (From UK)
www.wes.net · support@wes.net